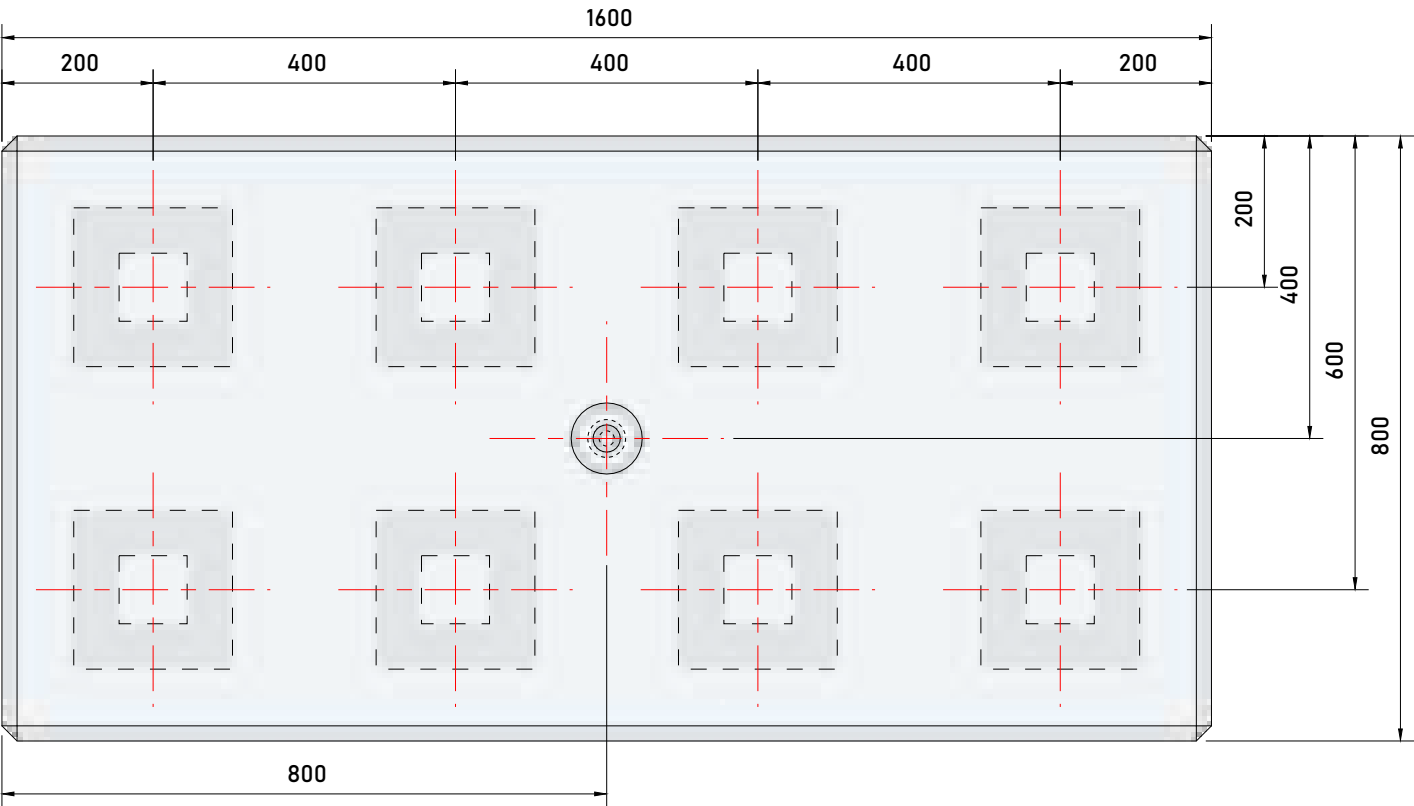
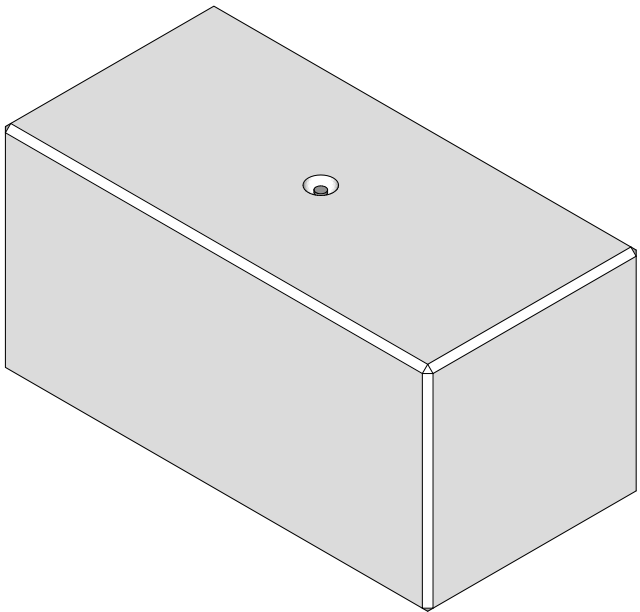


1. Handling

- Unit Volume / Weight
 - Unit Ref : LG7
 - Volume : 1.006 m³
 - Weight : 2365 kg
 - Weight is based on 2,350 kg/m³
 - Lifting system is by means of a 180mm long spherical pin anchor rated at 5.0 tonnes with a safety factor of 3.
 - Lifting is achieved by use of a 5.0t rated pin anchor ring clutch or combination ring clutch only and should comply with the Lifting Operation & Lifting Equipment Regulations 1998 (LOLER).
 - Lifting Pin Characteristics
 - Anchor Type : T-050-0180
 - Anchor Length : 180mm
 - dia : 20mm
 - Foot dia : 50mm
 - Load Class : 5.0 tonnes
- IMPORTANT NOTE :**
Prior to lifting older / pre-used blocks, check the lifting pin for wear / corrosion and check the block for cracks. If the block is cracked or the pin is worn, it could fail when lifting.



TOP



Isometric View

2. Concrete

- Characteristic 28 day cube strength = 50 N/mm² min.
- Concrete is Class A1 Fire Resistant in accordance with clause 4.3.4.4 of EN 13369

3. Manufacture

- Manufactured to : BS EN 13369 : 2013
- Tolerances to : BS EN 13670 : 2009

4. Physical & Chemical Properties

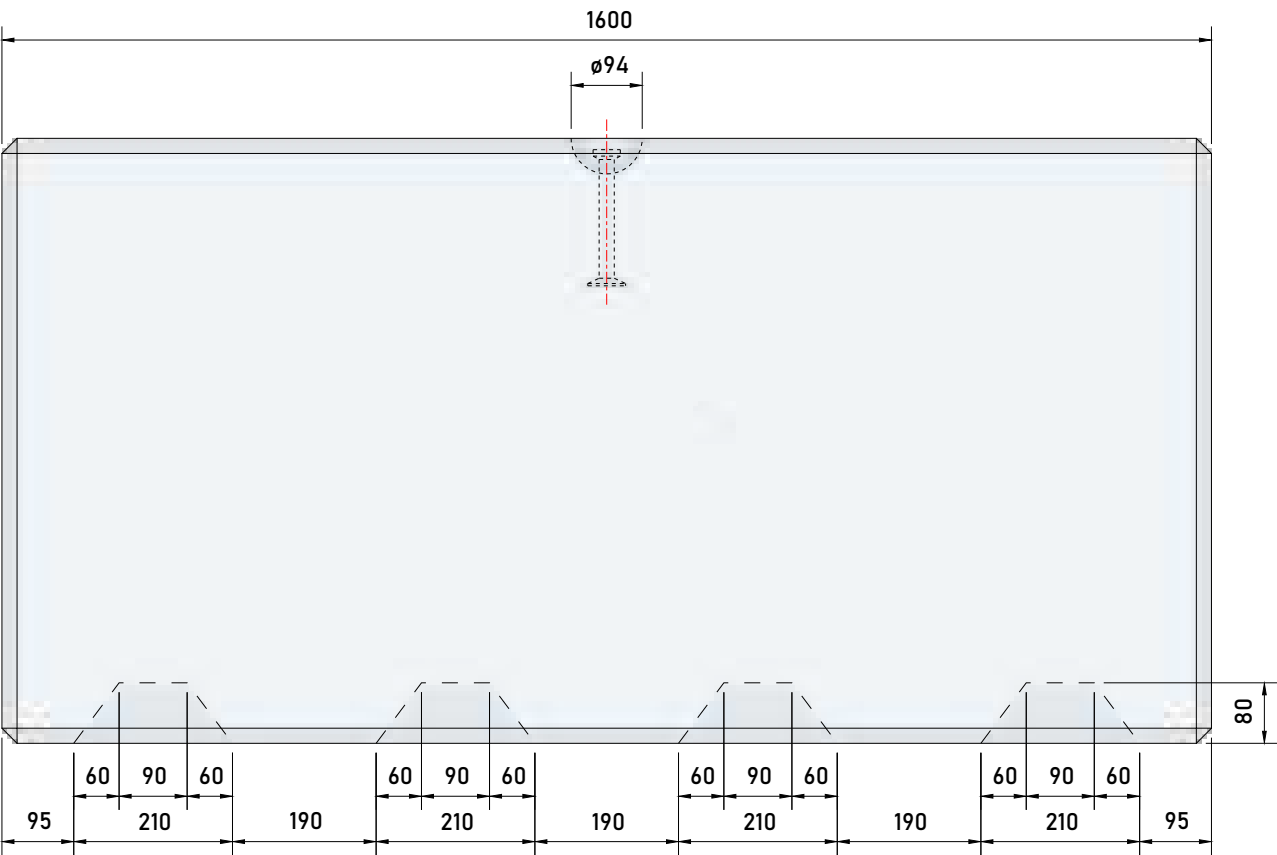
- Appearance : Grey in Colour
- Other Chemical Properties : Not Applicable

5. Design

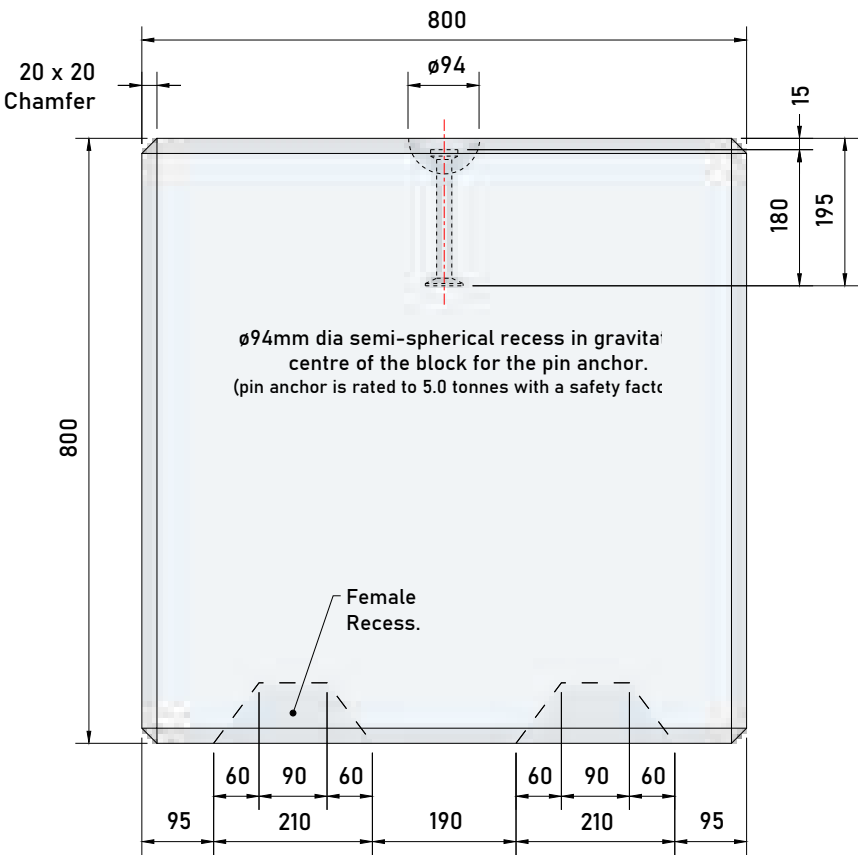
- Design Life : >100 years

6. Manufacture Tolerances



- Length : ±5mm
- Width : ±5mm
- Height : ±5mm



FRONT



SIDE

					C	20.01.23		CTC	RMD	TITLE																			
					B	12.03.20		CTC	RMD																				
					A	03.01.18		CTC	RMD																				
					O	23.06.16		CTC	RMD																				
REV	DATE	REASON FOR ISSUE			DRN	APP	REV	DATE	REASON FOR ISSUE			DRN	APP			DRN	CTC	CHKD	RMD	DATE	23-06-16	SIZE	A3	SCALE	1:10	DRG	EPC-LEG-007	REV	C